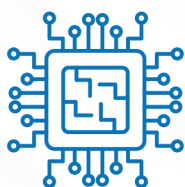


RESA M Ku Multi-Orbit



Requtech Electronically Scanned Antenna
- fully integrated satellite terminal for mobility on GEO & LEO



Fully integrated SATCOM terminal



Lightweight



Instantaneous connection for rapid
deployment in the harshest conditions

RESA M Ku Multi-Orbit is a fully integrated **Electronically scanned array** antenna terminal for **Multi-Orbit** functionality across **LEO** and **GEO** constellations for **on-the-move** and **on-the-pause applications**. This ruggedized terminal is **MIL-STD** designed with Field replaceable fan bays for all weather **IP67** operations for high reliability and high throughput with efficient acquisition and tracking algorithms. The fully electronically steered solution results in the **lowest Size, Weight, and Power for Maximum Performance**.

RESA series supports Marine, Vehicle & Portable applications



INTELSAT.
Qualified Terminal



requtech 

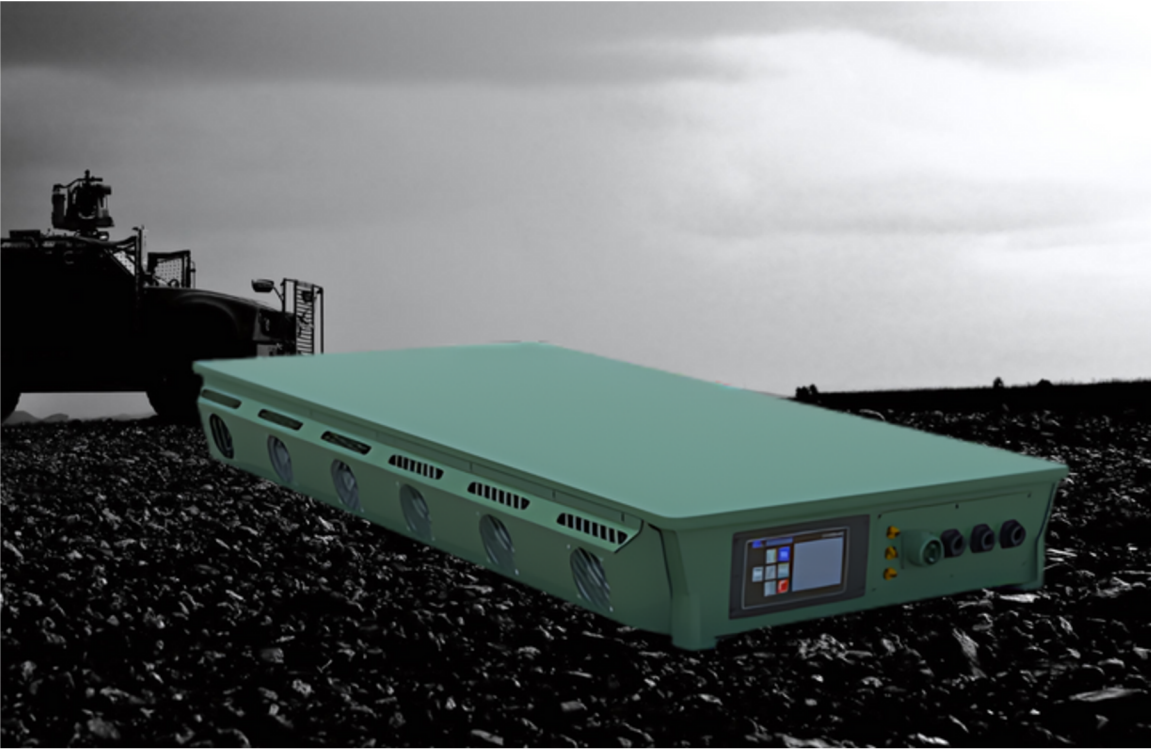
Made by Sweden: Reliability and Innovation in Challenging Environments



TECHNICAL DETAILS

| RF PERFORMANCE | |
|------------------------------------|---|
| TX Frequency | GEO 13.75 – 14.50 GHz OneWeb 14.00 – 14.50 GHz |
| RX Frequency | GEO 10.70- 12.75 GHz OneWeb 10.70 – 12.75 GHz |
| G/T, typical (boresight) | GEO 11 dB/K OneWeb 11 dB/K |
| Linear EIRP (boresight) | GEO 49 dBW OneWeb 36.6 dBW (OneWeb required) (The ESA aperture power corresponds to a 50W BUC or larger.) |
| Polarity | Linear or Circular electronically switched |
| Side-lobe PDR Tx | PSD Tx FCC 25.218 |
| Tx XPD | 25 dB |
| Rx XPD | 25 dB |
| ELECTRONIC SCANNING SPECIFICATIONS | |
| Tracking error | < 0.05 dB |
| Beam update rate | 100 Hz |
| Field of view | 160° |
| Azimuth adjustment | 360° with a pointing step size of 0.1° |
| Elevation adjustment | Electronically beam steering from 10° to 90° |

| ELECTRICAL SPECIFICATIONS | |
|------------------------------|--------------------------------|
| Power Supply (excl. Modem) | 24V |
| Power consumption (typical) | GEO 480W OneWeb 370W |
| INTERFACES | |
| DC Power | MIL-DTL-5015 (2-pin) |
| Ethernet | RJ45 |
| ENVIRONMENTAL SPECIFICATIONS | |
| Operating Temperature | -20° to +55°C / -5° to +130°F |
| Storage Temperature | -40° to +70°C / -40° to +160°F |
| Protection | IP67 |
| Wind | 250 km/h / 155 mph |
| WEIGHT AND DIMENSIONS | |
| Dimensions | L97xW55xH13 cm |
| Terminal Weight | 38 kg |



Requitech AB, based in Linköping, Sweden, is at the forefront of satellite communication technology. We specialize in developing high-performance, reliable satellite communication systems. Our mission is to revolutionize communication capabilities, enhancing global connectivity through innovative solutions.

Contact information
Telephone +46 (0)13 311771
E-mail info@requitech.se
www.requitech.com



*The present documentation provides typical specifications and data may change without notice.
© All rights reserved. No part of this publication may be reproduced, distributed, or transmitted in any form or by any means, without the prior written permission of ReQuTech AB.*

