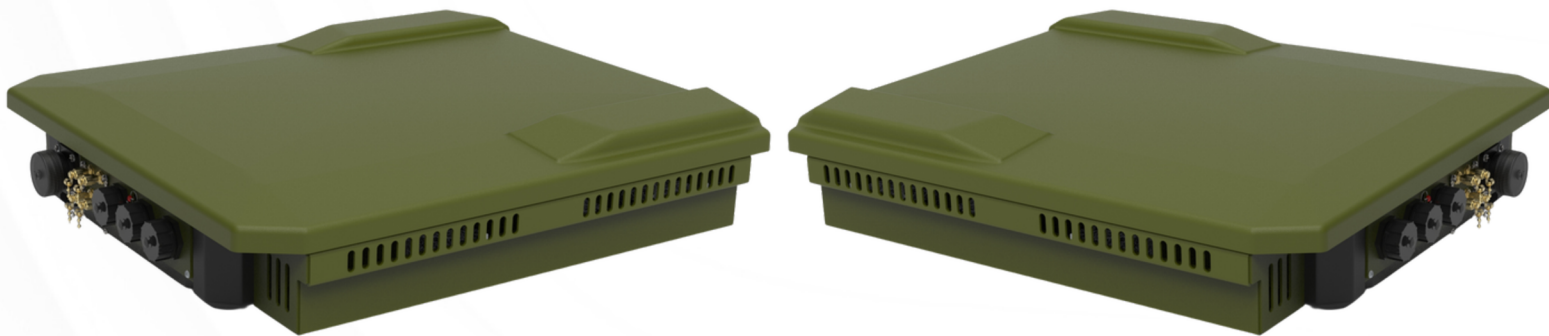
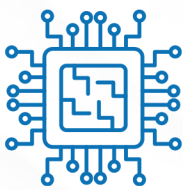


RESA S Ku



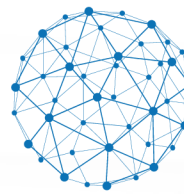
Requtech Electronically Scanned Antenna
- fully integrated satellite terminal for mobility



Fully integrated SATCOM terminal



Only 10kg



Instantaneous connection for rapid
deployment in the harshest conditions

RESA S Ku is a fully integrated **Electronically scanned array** antenna terminal for **on-the-move** and **on-the-pause applications**. This ruggedized terminal is **MIL-STD** designed with Field replaceable fan bays for all-weather **IP68** operations for high reliability and high throughput with efficient acquisition and tracking algorithms. The fully electronically steered solution results in the **lowest Size, Weight, and Power for Maximum Performance**.

RESA series supports Marine, Vehicle & Portable applications



requtech 

Made by Sweden: Reliability and Innovation in Challenging Environments



TECHNICAL DETAILS

RF PERFORMANCE	
TX Frequency	13.75 – 14.5 GHz
RX Frequency	10.7- 12.75 GHz
G/T, typical (boresight)	11 dB/K
Linear EIRP (boresight)	43 dBW
Polarity	Circular polarization for both RHCP and LHCP
Side-lobe PDR Tx	FCC 25.218, ITU R S.468
Tx XPD	25 dB
Rx XPD	25 dB
ELECTRONIC SCANNING SPECIFICATIONS	
Tracking error	< 0.05 dB
Beam update rate	100 Hz
Field of view	160°
Azimuth adjustment	360° with a pointing step size of 0.1°
Elevation adjustment	Electronically beam steering from 10° to 90°

ELECTRICAL SPECIFICATIONS	
Power Supply (excl. Modem)	24V 12A
Power consumption	280W
INTERFACES	
DC Power	MIL-DTL-5015 (2-pin)
Ethernet	RJ45
ENVIRONMENTAL SPECIFICATIONS	
Operating Temperature	-20° to +55°C / -5° to +130°F
Storage Temperature	-40° to +70°C / -40° to +160°F
Protection	IP68
Wind	250 km/h / 155 mph
WEIGHT AND DIMENSIONS	
Dimensions	L50xW45xH11 cm
Terminal Weight	25 kg



Requitech AB, based in Linköping, Sweden, is at the forefront of satellite communication technology. We specialize in developing high-performance, reliable satellite communication systems. Our mission is to revolutionize communication capabilities, enhancing global connectivity through innovative solutions.

Contact information
Telephone +46 (0)13 311771
E-mail info@requitech.se
www.requitech.com



*The present documentation provides typical specifications and data may change without notice.
© All rights reserved. No part of this publication may be reproduced, distributed, or transmitted in any form or by any means, without the prior written permission of ReQuTech AB.*

