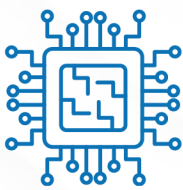


RESA S Ka



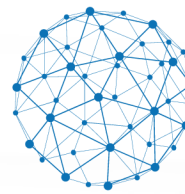
Requtech Electronically Scanned Antenna
- fully integrated satellite terminal for mobility



Fully integrated SATCOM terminal



Only 10kg



Instantaneous connection for rapid
deployment in the harshest conditions

RESA S Ka is a fully integrated **Electronically scanned array** antenna terminal for **on-the-move** and **on-the-pause applications**. This ruggedized terminal is **MIL-STD** designed with Field replaceable fan bays for all-weather **IP68** operations for high reliability and high throughput with efficient acquisition and tracking algorithms. The fully electronically steered solution results in the **lowest Size, Weight, and Power for Maximum Performance**.

RESA series supports Marine, Vehicle & Portable applications



requtech 

Made by Sweden: Reliability and Innovation in Challenging Environments



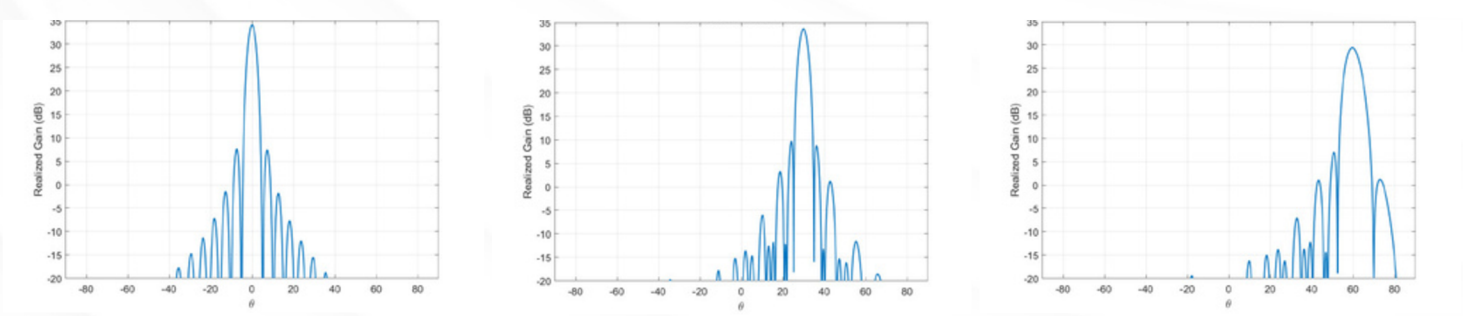
TECHNICAL DETAILS

RF PERFORMANCE	
TX Frequency	27.5 – 31.0 GHz
RX Frequency	17.7 – 21.2 GHz
G/T, typical (boresight)	11 dB/K
Linear EIRP (boresight)	43 dBW
Polarity	Circular polarization for both RHCP and LHCP
Side-lobe PDR Tx	FCC 25.218, ITU R S.468
Tx XPD	25 dB
Rx XPD	25 dB
ELECTRONIC SCANNING SPECIFICATIONS	
Tracking error	< 0.05 dB
Beam update rate	100 Hz
Field of view	160°
Azimuth adjustment	360° with a pointing step size of 0.1°
Elevation adjustment	Electronically beam steering from 10° to 90°

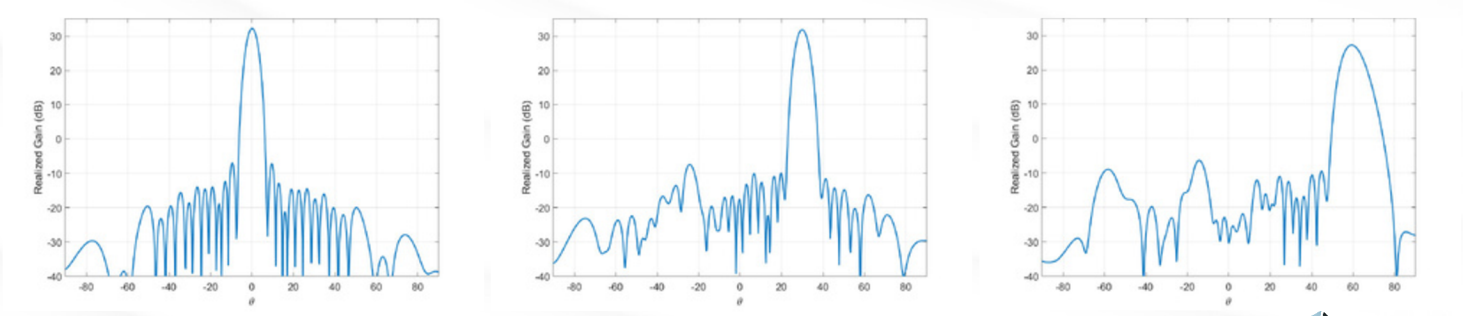
ELECTRICAL SPECIFICATIONS	
Power Supply (excl. Modem)	24V 12A
Power consumption	280W
INTERFACES	
DC Power	MIL-DTL-5015 (2-pin)
Ethernet	RJ45
ENVIRONMENTAL SPECIFICATIONS	
Operating Temperature	-20° to +55°C / -5° to +130°F
Storage Temperature	-40° to +70°C / -40° to +160°F
Protection	IP68
Wind	250 km/h / 155 mph
WEIGHT AND DIMENSIONS	
Dimensions	L50xW45xH11 cm
Terminal Weight	10 kg

ANTENNA GAIN DIAGRAMS WRT SCANNING (TYPICAL)

RESA Ka - Rx (20 GHz) – Electronic scanning 0 to 60 deg



RESA Ka - Tx (30 GHz) –Electronic scanning 0 to 60 deg



Requitech AB, based in Linköping, Sweden, is at the forefront of satellite communication technology. We specialize in developing high-performance, reliable satellite communication systems. Our mission is to revolutionize communication capabilities, enhancing global connectivity through innovative solutions.

Contact information
Telephone +46 (0)13 311771
E-mail info@requitech.se
www.requitech.com



*The present documentation provides typical specifications and data may change without notice.
© All rights reserved. No part of this publication may be reproduced, distributed, or transmitted in any form or by any means, without the prior written permission of ReQuTech AB.*

